

DRAWING NUMBER  
47/178

A PLANNED UNIT DEVELOPMENT

# GOLDEN LAKES VILLAGE SECTION THIRTEEN

SHEET 2 OF 2

178

GOLDEN LAKES VILLAGE SECTION TWELVE  
P.B. 44, PAGES 142-143

DRAWING NUMBER

DRAWING NUMBER

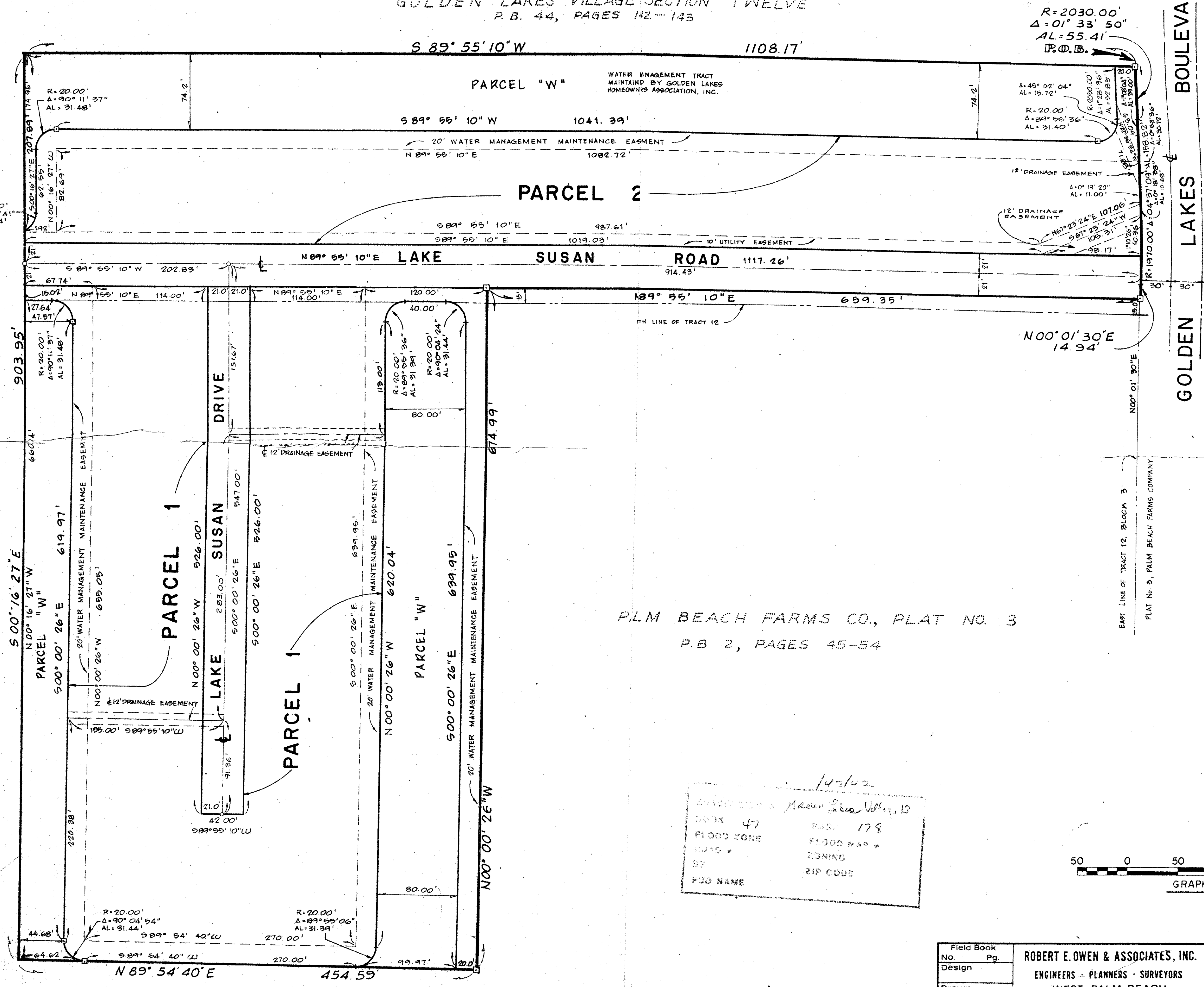
DRAWING NUMBER

PLAN HOLD CORPORATION • IRVINE, CALIFORNIA  
RECORDED BY NUMBER 17348

PLAN HOLD CORPORATION • IRVINE, CALIFORNIA  
RECORDED BY NUMBER 17348

PLAN HOLD CORPORATION • IRVINE, CALIFORNIA  
RECORDED BY NUMBER 17348

PALM BEACH FARMS CO., PLAT NO. 3  
P.B. 2, PAGES 45-54

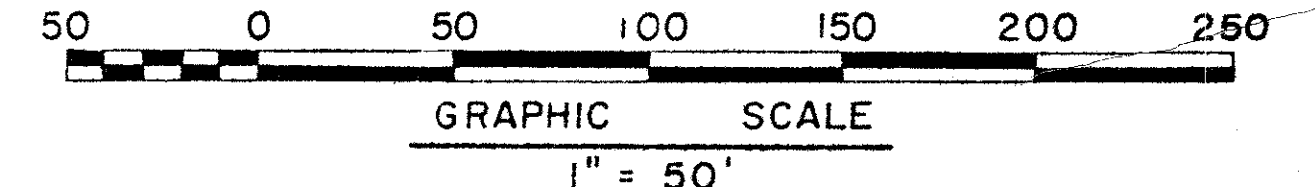


P.L.M BEACH FARMS CO., PLAT NO. 3  
P.B. 2, PAGES 45-54

0251-307

142/42  
 47  
 FLOOD ZONE  
 ROAD #  
 ZIP  
 PUD NAME

Adrian Lake Village, 13  
 ROAD # 178  
 FLOOD MAP #  
 ZONING  
 ZIP CODE



|                  |                                   |                            |                    |
|------------------|-----------------------------------|----------------------------|--------------------|
| Field Book No.   | ROBERT E. OWEN & ASSOCIATES, INC. | GOLDEN LAKES VILLAGE       | Job No. 83-1004    |
| Design           | ENGINEERS - PLANNERS - SURVEYORS  | SECTION THIRTEEN           | Scale AS SHOWN     |
| Drawn L. Bispoft | WEST PALM BEACH FLORIDA           | A PLANNED UNIT DEVELOPMENT | Date JAN. 1984     |
| Checked          |                                   |                            | Sheet 2 of 2       |
|                  |                                   |                            | File No. BF-2319-F |